



Japan Jazz  
Pop Piano  
Competition

## The 3rd JAPAN JAZZ POP PIANO COMPETITION

第3回 ジャパン・ジャズ・ポップ・ピアノコンペティション

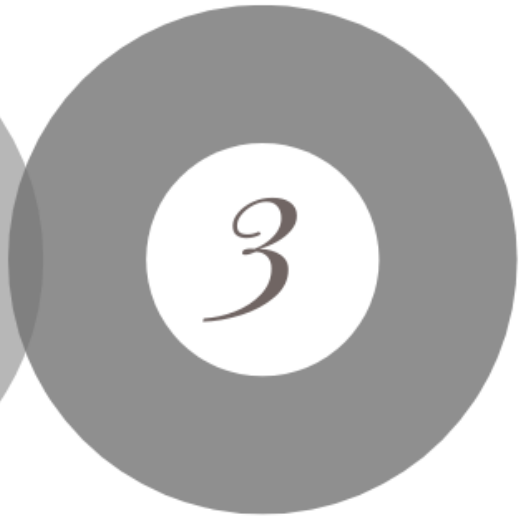
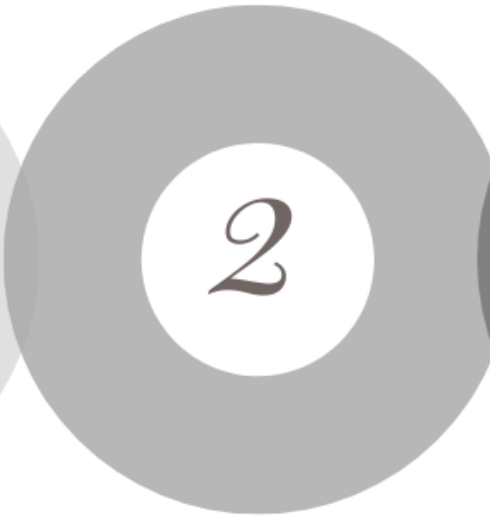
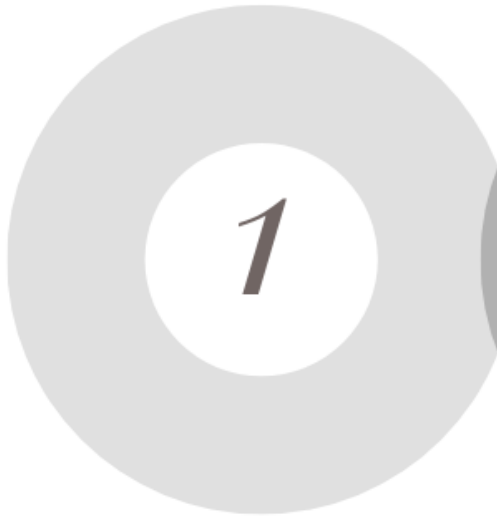
The aim of this competition is to recapture the artistic freedom that was prevalent in the past. Through jazz and pop music, the participants will rediscover or further enhance their creativity and personal expression. The panel of judges consists of artists with active performing careers and extensive experience in teaching. The requirements and standards of the competition will differ depending on the level of the contestant. It goes without saying that advanced players would also be welcome.

The criteria of assessment would change accordingly based on the divisions. However, beauty of tone is essential and will be taken into consideration for all levels. The team of judges will evaluate the contestants' performances and offer individual advice. I hope you will join us, and most importantly, take something away from this experience.

**Organized by :** Roobato Co. (former Sobkowiak Piano Association)

**Supported by :** Sunphonix Corp.

**Endorsed by :** Polish Cultural Institute in Tokyo / Kawasaki Jazz / "The City of Music, Kawasaki" Promotion Committee / Showa University of Music / IMC Music Publisher Ltd. / European Piano Association / Steinway Japan, Ltd. / JAZ.IN



## Warm-Up

**6/24-7/1**

*Online*

\* Upload your video on YouTube + receive feedback online

\* Both beginners who simply want feedback, as well as potential participants of the Competition are welcome!

\* The Warm-Up is not mandatory to enter the Competition

## Competition

**9/21-22**

*Hall*

\* Choose your Genre  
-Jazz  
-Pop

\* Choose your Division  
-Performer  
-Creator  
-Specialist

\* The Competition will be streamed live

## Gala Concert

**9/23**

*Hall*

\* Winners of Gold, Silver, Bronze medals may perform

\* Participants of the Competition may enter free of charge

\* The winners of the Grand Prize will be announced at the Gala Concert

# Table of Contents

**Competition** [p.3](#)

**Warm-Up** [p.8](#)

**Application** [p.11](#)

**Gala Concert** [p.14](#)

**Inquiry** [p.15](#)

1

Warm-Up: see [p.8](#)

2

# COMPETITION

**DATE : 2024 September 21st (Sat) Jazz  
22nd (Sun) Pop**

\*If there are many more applicants for one Division compared to the other, the performances may extend over both days

**VENUE : Shibuya Mitake Salon**

1-12-8 Shibuya Shibuya-ku, Tokyo



**APPLICATION DEADLINE : August 21st (Wed), 2024**

## GENRES / DIVISIONS

**Genres :** Please choose from the following

### JAZZ

This genre is for piano pieces that contain what is commonly understood as a "jazz" style, including ballad, bebop, blues, Latin, ragtime, swing, or other variations and combinations.

- ① Performer
- ② Creator
- ③ Specialist

### POP

This genre is for piano pieces that contain what is commonly understood as "pop", which has undergone transformations since its birth in the 1950s. We understand this vast genre to include anime, country, dance, folk, lounge music, rock, urban, or other variations and combinations.

- ① Performer
- ② Creator
- ③ Specialist

**Divisions** : Participants can choose from either a solo or a four-handed performance, as well as one of the 3 Divisions.

### ① Performer

One may select any piano piece written in a jazz or pop style, including compositions and arrangements published by others. (If playing an original piece composed by the contestant, please refer to the **Creator Division**) The piece could be played while reading music, but playing by heart is recommended and will be taken into consideration when judging.

Due to the fact that some published pieces or arrangements may not be widely known, all contestants must send the music scores beforehand. With respect to the composers and arrangers, the contestants must play the piece exactly as written, including all repetitions. Otherwise, points will be deducted.

### ② Creator

One may arrange a composer's piece or even compose an original piece at home and perform in front of the judges. The piece (arrangement or composition) needs to be kept in the style of jazz or pop and **be the contestant's own work**. The contestants may play by reading the score, but playing by heart is recommended and will be taken into consideration when judging.

If playing exactly the same as how another person has arranged the piece, the contestant should apply for the **Performer Division**, not the Creator Division. (If it becomes evident that the arrangement/original piece was not the work of the contestants, they will be disqualified)

If an **arrangement by the contestant**: Please submit the original music score (or lead sheet). Contestants are free to change the structure or the tonality of the piece.

If an **original piece composed by the contestant**: The submission of the music score is optional.

### ③ Specialist

This is a Division in which participants will be required to arrange a piece of music chosen at random by the judges. Once they signal to the judges that they are seated comfortably, the participants will be given a lead sheet out of a prepared list of jazz or pop standards as well as 30 seconds to prepare. Once the bell rings after 30 seconds, the participants will start playing. A free spontaneous arrangement can be based on any chosen style but must include jazz or pop elements.

# IMPORTANT NOTICE

- \* If you do not know which genre (Jazz or Pop) is more fitting, please feel free to contact us prior to your registration. Send us a sample link, PDF file, or audio file and we would be happy to assist you.
- \* Please sign up from the **application page for the Competition** and fill in the necessary information regarding the Genre, Division, length of the piece(s), etc.
- \* It is possible to apply for multiple divisions and across both genres.
- \* When playing multiple pieces, the break between pieces would also be included in their total playing time.
- \* The timer will start after the contestant has sat down.
- \* If the contestants go over the allotted time, their performance will be cut off, but this will not affect their result. It is advisable to bring a watch to keep track of the time. It is also acceptable to use smartphones as timers, but please make sure that it is on silent mode and would not disrupt the performance.
- \* There will not be any support piano pedals for children, so please bring if needed.
- \* Due to common restrictions of the hall, techniques involving the manipulation of the strings are prohibited.
- \* **The performance can only be recorded (audio or video) by the contestants themselves or their supporters**. Please also note that the **feedback by the judges, as well as comments during the awards ceremony may not be recorded**.
- \* Due to the capacity of the hall, we may limit the number of spectators. Therefore, the Competition will be streamed live on both days. Please choose whether to be shown when applying.
- \* The copyright of the videos and photos taken by the staff belongs to the Competition, and participants shall not claim image rights. The videos and photos may be used on the official website, video distribution on YouTube, and pamphlets and videos for commercial purposes by sponsoring companies.
- \* Dressing rooms will not be available at the venue.

## GENRE / DIVISION / GROUP

<b>JAZZ</b>	<b>① Performer</b>	KDIS	<b>POP</b>	<b>① Performer</b>	KDIS
		TEENS			TEENS
		ADULTS			ADULTS
		FOUR-HANDS			FOUR-HANDS
	<b>② Creator</b>	KDIS		<b>② Creator</b>	KDIS
		TEENS			TEENS
		ADULTS			ADULTS
		FOUR-HANDS			FOUR-HANDS
	<b>③ Specialist</b>	KDIS		<b>③ Specialist</b>	KDIS
		TEENS			TEENS
		ADULTS			ADULTS
		FOUR-HANDS			FOUR-HANDS

## JURY

### Jury Members :

Michał Sobkowiak (Chairman)

Simon Cosgrove

Jonathan Katz

Sławomir Stanisław Kowalewski

\* The list of jury members is subject to change

### Comments :

After each Group, the judges will give feedback on stage. Written comments regarding the individual performances will be available within 1-2 hours at the reception desk.

# RESULTS / PRIZES

The results will be announced on the JJPPC website at the end of each day.

## **1) Prizes: Encouragement, Participation**

For every group under each Division, recipients will be given a diploma.

The diplomas will be awarded on stage on September 23rd before the Gala Concert begins. For this award ceremony, friends and family may enter the hall free of charge.

If contestants will not be attending the Gala Concert, please bring the blue Letter Pack on the day of the Competition.

## **2) Prizes: Gold, Silver, Bronze**

For every group under each Division, winners will receive a diploma and a medal, as well as a chance to perform at the Gala Concert.

The diplomas and medals will be given out on September 23rd at the Gala Concert. If contestants will not be attending the Gala Concert, please bring the blue Letter Pack on the day of the Competition.

The recipients of the following will be announced at the Winners Gala Concert.

## **3) Grand Prize**

Out of all the players, the top contestant from each Genre (Jazz/Pop) will receive a Grand Prize trophy.

## **4) Sunphonix Prize**

The most outstanding Jazz pianist (or a duo) will be granted a cash prize of ¥100,000.

## **5) Toho Gakuen Prize**

The most outstanding Pop pianist (or a duo) will be granted a cash prize of ¥100,000.

\* Depending on the level of the performances, medals may not be given, and there may also be multiple recipients of the same award.

\* If the Grand Prize winner does not attend the Gala Concert, the trophy will be sent COD.



# WARM-UP

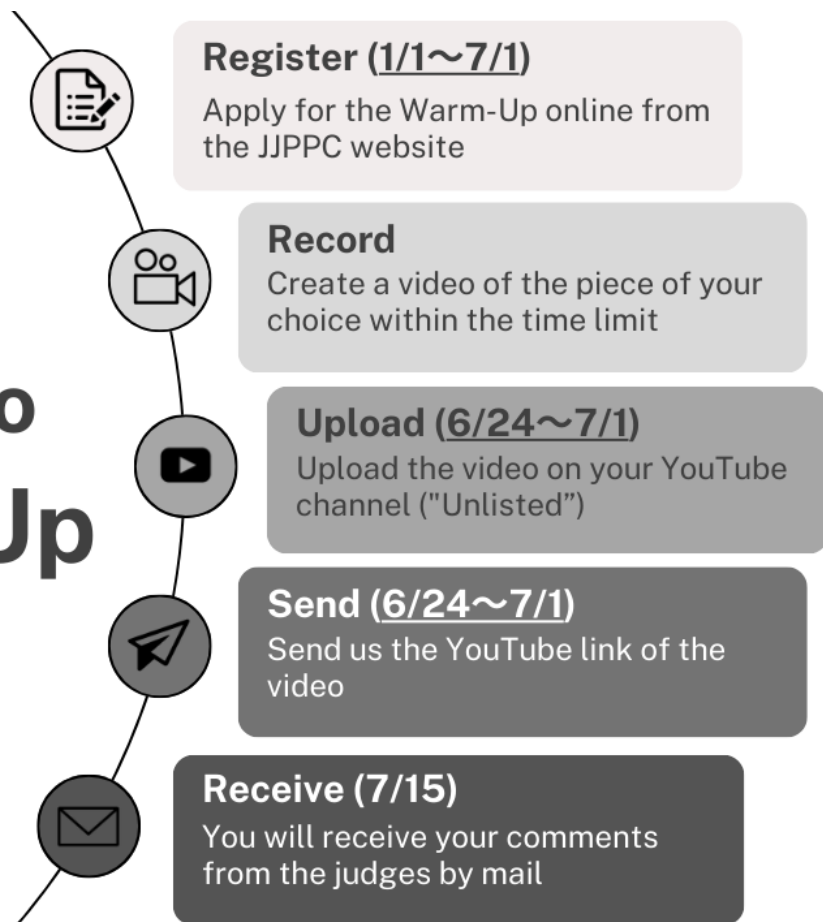
The Warm-Up is an opportunity to receive feedback online from the judges of the Competition.

## The Warm-Up is designed for the following:

- 1) Those who do not feel ready to participate in the Competition, yet wish to receive feedback from the judges to improve their playing.
- 2) Those who plan on participating in the Competition, but wish to receive guidance from the judges in the preparatory process.

## You can join the Warm-Up in 5 simple steps:

## 5 Steps to Warm-Up





## **Important:**

- \* Participants will choose the Genre (Jazz / Pop), Division (Performer / Creator), and the length of the piece(s) when applying. Like the Competition, the participants are free to choose the piece(s) they wish to play.
- \* There is no Specialist Division in the Warm-Up.
- \* Please sign up from the **application page for Warm-Up** and fill in the necessary information.
- \* Participants of the Warm-Up are not required to sign up for the Competition, but they may do so before the registration deadline (8/21). **It is possible to apply for different Genres, Divisions, and lengths of piece(s).**
- \* Likewise, contestants for the Competition may choose not to join the Warm-Up.
- \* Since the Warm-Up is not a competition, the participants will receive written comments, and there will not be any scores or medals given.
- \* The comments will be written in English and will be sent by Email.

# FEES

## Warm-Up

<b>KIDS</b> ages 12 and under		<b>TEENS</b> ages 13-19		<b>ADULTS</b> ages 20 and above		<b>FOUR-HANDS</b> (per pair) age does not apply	
¥8,000	~ 3min	¥9,600	~ 3min	¥11,200	~ 3min	¥12,800	~ 3min
¥8,800	~ 4min	¥10,400	~ 4min	¥12,000	~ 4min	¥13,600	~ 4min
¥9,600	~ 5min	¥11,200	~ 5min	¥12,800	~ 5min	¥14,400	~ 5min
¥10,400	~ 7min	¥12,000	~ 7min	¥13,600	~ 7min	¥15,200	~ 7min
¥12,000	~ 10min	¥13,600	~ 10min	¥15,200	~ 10min	¥16,800	~ 10min

## Competition

<b>KIDS</b> ages 12 and under		<b>TEENS</b> ages 13-19		<b>ADULTS</b> ages 20 and above		<b>FOUR-HANDS</b> (per pair) age does not apply	
¥10,000	~ 3min	¥12,000	~ 3min	¥14,000	~ 3min	¥16,000	~ 3min
¥11,000	~ 4min	¥13,000	~ 4min	¥15,000	~ 4min	¥17,000	~ 4min
¥12,000	~ 5min	¥14,000	~ 5min	¥16,000	~ 5min	¥18,000	~ 5min
¥13,000	~ 7min	¥15,000	~ 7min	¥17,000	~ 7min	¥19,000	~ 7min
¥15,000	~ 10min	¥17,000	~ 10min	¥19,000	~ 10min	¥21,000	~ 10min

# APPLICATION

Please apply through the competition website and transfer the participation fee. Be aware that there are separate application forms for the Warm-Up and the Competition.

If the application number reaches the limit before the deadline, the notice will be posted on this website. We cannot respond to any inquiries regarding this matter.

**Warm-Up Deadline:** Monday, July 1st, 2024

**Competition Deadline:** Wednesday, August 21st, 2024

\* The payment should be completed within 2 weeks after the application. All bank charges are to be paid by the contestants.

\* The participation fee is non-refundable.

\* In the event of natural disasters, such as typhoons and earthquakes, this Competition may be cancelled and will be announced on this website. In such unavoidable cases, entry fees will be fully refunded to the participants.

\* The previous winners of the Grand Prize may participate again this year if they apply under a different Division.

## **Bank account:**

Mizuho Bank, Mukogaoka Branch

Account number: 540-3084494

Swift: MHCBJPJT

Recipient: Roobato Co.

## **After the application :**

A confirmation message will be sent within 3 business days once the application has been received. If you do not receive the email, please contact the committee (info@jazzpiano.jp).

\* Please be sure to provide us an address that accepts emails from our "info@jazzpiano.jp" domain.

\* After the application, communication between the committee will be done on the application "LINE".

\* The contestants will receive their schedule by **September 11th.**

### Submission (Warm-Up) :

Contestants are required to send the following by LINE or email.

1) If applying for the **Performer Division:**

the music score of the chosen piece

If applying for the **Creator Division** and wish to arrange a piece:

the original music score

2) The **URL of the uploaded YouTube video**

\* There is no need for a photo for the Warm-Up

WARM-UP	Scores	URL
Performer Division	<input type="radio"/>	<input type="radio"/>
Creator Division (Arrangement)	<input type="radio"/>	<input type="radio"/>
Creator Division (Original Piece)	<input type="checkbox"/> optional	<input type="radio"/>

### Submission (Competition) :

Contestants are required to send the following by LINE or email.

1) If applying for the **Performer Division:** the music score of the chosen piece

If applying for the **Creator Division** and wish to arrange a composer's piece:

the original music score

2) A **photo of the contestant**

COMPETITION	Scores	Photo
Performer Division	<input type="radio"/>	<input type="radio"/>
Creator Division (Arrangement)	<input type="radio"/>	<input type="radio"/>
Creator Division (Original Piece)	<input type="checkbox"/> optional	<input type="radio"/>
Specialist Division	—	<input type="radio"/>

**Important:**

**Photo:** There is no need for an official ID photo. It will be used for identification on the day of the Competition.

**Music Scores:** Please send the PDF (recommended) or image. Make sure to scan/take a photo 1 page at a time.

- \* If it is difficult to see the image, the committee may ask to resubmit the photo/music scores.
- \* When sending the data of the music scores, please be sure to let us know how many pages there are in total to make sure there are no missing pages.



# GALA CONCERT

**Date: September 23rd, 2024 (Mon) \*National Holiday**

**Venue: Showa University of Music Yuri Hall**

1-11-1 Kamiasao Asao-ku, Kawasaki, Kanagawa



## **Recipients of Gold, Silver, and Bronze Prize:**

Gold, Silver, and Bronze Prize winners will receive their prizes and perform at the Gala Concert. No additional fees will be required. If contestants will not be attending the Gala Concert, please bring the blue Letter Pack on the day of the Competition so that the diploma and medal will be sent.

The performers may play a piece that is different from those played during the Competition, but their performance must be within the time they are registered. They will be asked which piece(s) they would like to play when it gets closer to the Competition.

We ask friends and family to purchase a ticket for the Gala Concert. We apologize in case all the seats are sold out.

## **Recipients of Encouragement and Participation Awards:**

There will be a Ceremony for the two Awards before the Gala Concert begins. Friends and family may attend the Ceremony without additional fees. If contestants will not be attending the Gala Concert, please bring the blue Letter Pack on the day of the Competition so that the diploma will be sent.

After the Ceremony, we will ask everyone to leave the hall for preparation. Participants of the Competition may enter the Gala Concert free of charge, but we ask friends and family to purchase a ticket. We apologize in case all the seats are sold out.

## **Grand Prize:**

At the end of the Gala Concert, there will be a closing ceremony where the recipients of the Grand Prize and other prizes will be announced.

Further information will be provided closer to the date.

# INQUIRY

**JAPAN JAZZ POP PIANO COMPETITION Office**

**MAIL:** info@jazzpiano.jp

**TEL:** +81-90-9423-0713 (English)

**ADDRESS:** 4-3-13 Sonan Minami-ku Sagamihara-shi,  
Kanagawa, JAPAN

**Official Website:** <https://jazzpiano.jp>



**Instagram:** @jazzpiano\_jp  
(#jjppc #japanjazzpoppianocompetition)



**YouTube:** @japanjazzpoppianocompetition



©2022-2024 Roobato Co. All rights reserved.

ROOBATO